

## Casting: High Precision grey and SG iron cast components

### Foundry:

RSM Castings Ltd – Northampton, England

### Objectives:

- Improve coating application consistency
- Reduce casting defects
- Automated coating control and adjustment
- Improved QC and standards to meet latest automotive requirements

### Alloy:

SG & grey Iron

### Core making:

Up to 30 kg

### Pouring temperature:

1400-1450 °C

### Pouring weight:

Up to 180 kg per cluster

### Moulding process:

High precision shell moulding

### Requirements:

- Reduce wet layer thickness variation
- Automate coating use
- Be compatible with latest best practise standards for robot dip application
- Improve QC recording for coating
- Supply a simple, robust and easy to use equipment

### Problems:

- Dip tank is also used to supply coating for other applications
- Operators dilution variations
- No reproducible coating control

### Improvements:

- Automated coating control and readjustment
- Reduced coating waste
- Reduced scrap level
- Impressed customers customer due to QC records

### Foseco Products

- SEMCO\* Sil 3104 F
- SEDEX\* Filter
- FEEDEX feeder sleeve
- POLITEC Cold Box Binder

### Key Benefits

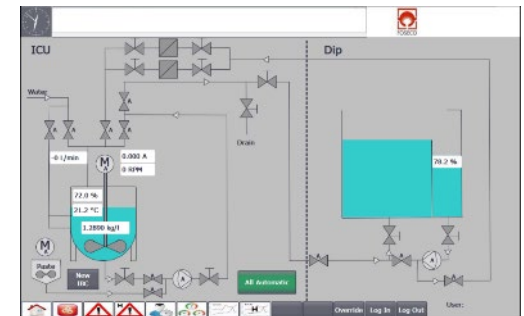
- Operator independent and consistent dilution of SEMCO Sil 3104 F resulting in a very regular layer thickness
- Uniform + consistent wet layer
- Data recording for audits
- System is almost maintenance free
- Very simple online access



Only 3 buttons to operate



Intelligent Coating Unit



Smart, web connected control cabinet with touch screen remote viewing/data logging



Advanced, fast and maintenance free inline density measurement system

