

# ECOLOTEC\*



## WATER BASED RESOLE CO<sub>2</sub> PROCESS

- Low VOC emissions
- Prevention of sand expansion defects
- Excellent casting finish
- Suitable for all sands
- Alternative to PUCB

# ECOLOTEC

Water based resole CO<sub>2</sub> process

The ECOLOTEC process is based on the use of a water-soluble phenolic resin, condensed under alkaline conditions. The resin is the only binder component that has to be mixed with the sand. The resin does not contain any nitrogen, phosphorus or sulphur. All sand types (e.g. silica, chromite or chamotte) can be used successfully. To harden the mixed sand CO<sub>2</sub> has to be gassed into the corebox. CO<sub>2</sub> acts as a reaction partner with the resin, not as a catalyst.

## Productivity

Core production cycle times with the ECOLOTEC process are relatively short and comparable to Polyurethane Coldbox processes. Cores made in ECOLOTEC resin offer high as-gassed strengths, and due to the high reactivity of the binder system, gassing times are short. ECOLOTEC binder resin-bonded cores do not need an extra purging cycle after gassing because carbon dioxide is non-hazardous. Due to the ECOLOTEC binder chemistry, there is no need for the use of core coatings in many applications.

## Environmental aspects

The ECOLOTEC process is the most environmentally friendly gas cured organic binder process available in the market and offers significant environmental benefits compared to other core manufacturing processes:

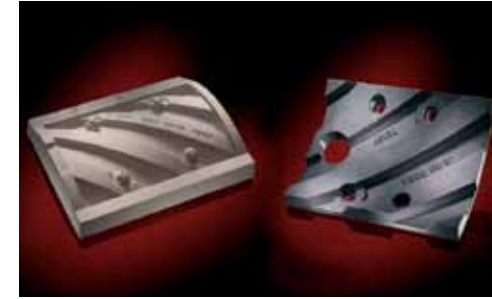
- Non-flammable
- Very low free phenol and formaldehyde
- No isocyanates, peroxides, amines or sulphur-based compounds
- No noxious fumes during mixing and core-making

## Casting performance

Binder bridges in the ECOLOTEC process are more elastic than in many other core-making processes. Hence casting defects related to sand expansion, such as veining, are significantly suppressed or eliminated and anti-veining additives are usually not required to obtain sound castings.



Impeller for high-efficiency centrifugal pumps



Wear plates



Segment for an impeller for a sea water desalination plant



\*FOSECO, the Logo and ECOLOTEC are trade marks of the Vesuvius Group, registered in certain countries, used under licence. All rights reserved. No part of this publication may be reproduced, stored in a retrieval system of any nature or transmitted in any form or by any means, including photocopying and recording, without the written permission of the copyright holder or as expressly permitted by law. Applications for permission shall be made to the publisher at the address mentioned.

Warning: The doing of an unauthorised act in relation to a copyright work may result in both a civil claim for damages and criminal prosecution. All statement, information and data contained herein are published as a guide and although believed to be accurate and reliable (having regard to the manufacturer's practical experience) neither the manufacturer, licensor, seller nor publisher represents nor warrants, expressly or impliedly: (1) their accuracy/reliability, (2) that the use of the product(s) will not infringe third party rights, (3) that no further safety measures are required to meet local legislation. The seller is not authorised to make representations nor contract on behalf of the manufacturer/licensor. All sales by the manufacturer/seller are based on their respective conditions of sale available on request.

© Foseco International Limited 05/11.

COMMITTED TO FOUNDRIES

**Foseco International Limited**  
Drayton Manor Business Park,  
Tamworth, Staffordshire,  
England B78 3TL,  
Phone: +44 (0)1827 262021  
Fax: +44 (0)1827 283725  
www.foseco.com

Please contact your local Fosco team