

Picture courtesy of INES

SOLAR[®] Crucible MLC[™]

Boost your furnace productivity for mono-like ingots

Partners in Performance



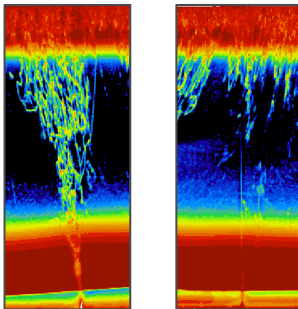
SOLAR[®] Crucible MLC[™] – Mono-Like Crucible

Homogenize your mono-like crystal growth



SOLAR[®] is the Vesuvius brand of all technical solutions developed for the photovoltaic industry. The SOLAR[®] Crucible MLC[™] is a crucible used for the fusion and the crystallization of polysilicon in the manufacturing of mono-like silicon ingots. The MLC[™] has been specially engineered to match mono-like special requirements.

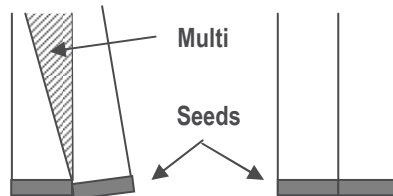
Higher share of mono-crystal ingot



Standard

MLC[™]

Seeded directional solidification requires perfect flat bottom surface to optimize mono-crystal ratio.



Standard

MLC[™]

Ref: INES (Institut National de l'Energie Solaire), Crystalline Silicon Solar Cells, 2011.

SOLAR[®] Crucible MLC[™] benefits

- **Perfect seed alignment**
Enabling homogeneous crystal growth and higher yield of mono-like material per ingot
- **Improved control front through consistent and uniform bottom thickness**
- **Smaller red zone**
Best ingot yield through 20 to 25% reduced bottom red zone
- **Low diffusion of impurities from the crucible to the ingot**
- **Shorter cycle time**
3 hours gain in average on crystallization time
- **No sticking**
Through Vesuvius patented coating solution which prevents coating flaking
Through coating deposition profile adjusted to application requirements
- **Easy ingot release and no additional ingot cleaning required before squaring**

Where to find SOLAR[®] Crucibles ?

Website: www.vesuvius.com

Contact us: www.vesuviusinquiry.com

