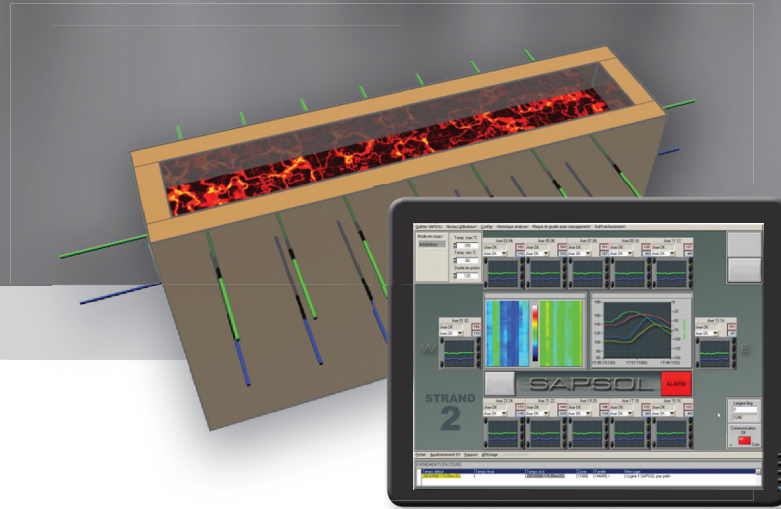
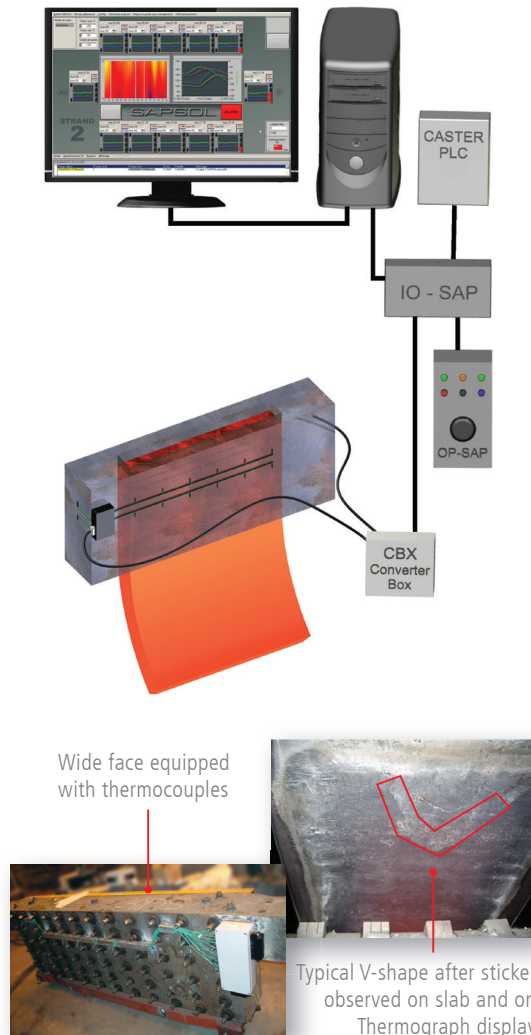


# SAPSOL

Break-Out Prevention System



# Simple and easy way to reduce casting incidents at your caster



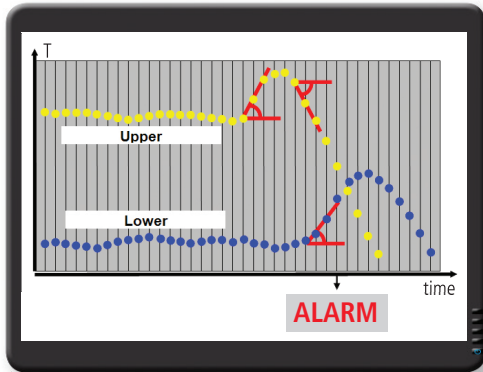
## Technical specifications

- Measuring chain:
  - > Thermocouples:
    - K-type, with unique design for horizontal mounting
    - Installation on 2 rows for break out prevention function
    - Possibility to equip with additional rows for thermal mapping
- Analysis, HMI and storage computer:
  - > 1 PC DELL Workstation per strand
  - > Software:
    - SDS-7 sticking detection program, with auto-healing management
    - SUP-7 supervisor program for user interface, incl. thermal monitoring display
  - > Storage capacity: typically 1 year.

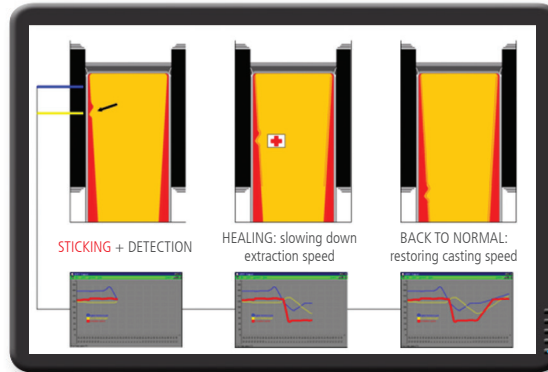
## Features

- Can fit to upgrade existing or equip new caster.
- Horizontal or vertical mounting of thermocouples for more flexibility.
- Thermocouple-spring design to guarantee the contact with copper plate.
- Special algorithm feature to minimize false alarm rate.
- Includes auto-healing management for minimum operator involvement.
- Thermocouples can be easily replaced individually, without dismantling the whole plate / water jacket arrangement for maximum system operability.
- Only one thermocouple design valid for all mould plates for spare savings.
- Plugs on moulds to avoid cable hanging to mould when it is removed.
- Tools to facilitate checking the system operability before sequence.
- Possibility of assistance contract to maximize system performance, throughout progressive casting program evolution.

## Software functions



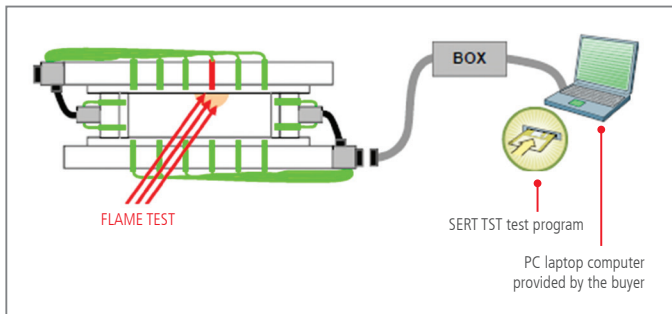
1. Sticking detection



2. Healing under operator's control or auto-healing



3. Simple, intuitive Human-Machine Interface



4. Simulation program to check the system

## Typical performance observed

- Over 95 % of sticking are alarmed
- The false alarm rate is minimized to some few events per month, per strand



For more information on this product and on our complete package of solutions please contact our local service center :

**VESUVIUS GROUP, S.A.**

Rue de Douvrain, 17  
7011 Ghlin, Belgium  
Tel: +32 65 400 810  
Fax +32 65 311 474  
gh@vesuvius.com

**VESUVIUS USA CORP.**

P.O. Box 4014  
1404 Newton Drive  
Champaign, IL 61822  
USA  
Tel: +1 217 351 5000  
Fax: +1 217 351 5031

**SERT METAL / VESUVIUS GROUP**

3 avenue de l'Europe  
69150 Décines - France  
Tel: +33 4 7826 0180  
Fax: +33 4 7841 4000  
sales@sert-metal.com  
www.sert-metal.com

**VESUVIUS REFRATARIOS, LTDA**

Av. Brazil 49.550  
Distrito Industrial de Palmares  
CEP '23065-480-Campo Grande  
Rio de Janeiro , Brazil  
Tel: +55 21 2414 0606  
Fax: +55 21 2414 0648

**VESUVIUS INDIA LTD**

P 104, Taratolla Road  
700088 Calcutta, India  
Tel: +91 33 240 10 234  
Fax: +91 33 240 11 235

**VESUVIUS ADVANCED CERAMICS (CHINA) CO., LTD**

221 Xing Ming Street  
China-Singapore Suzhou Industrial Park  
Suzhou 215021, JiangSu Province  
P.R. of China  
Tel.: +86 512 6741 2088  
Fax: +86 512 6741 1700

VESUVIUS reserves the right to modify and/or improve the equipment as described and specified in this leaflet, at any time according to the state-of-art. SAPSOL – patent applied for in various countries.

© copyright Vesuvius Group, S.A. 2015 all rights reserved.

All product names in this brochure are trademarks or registered trademarks of Vesuvius plc group of companies.