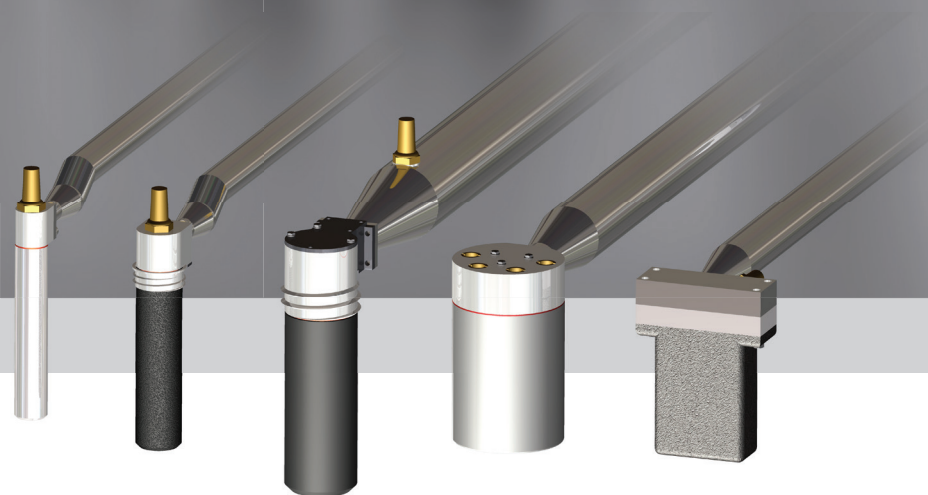


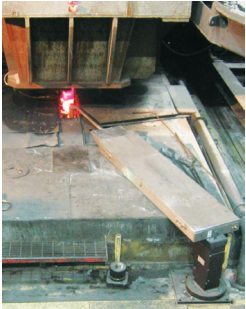
# XLEV-S

AVEMIS Eddy Current Mould Level Sensor  
(Suspended Type)



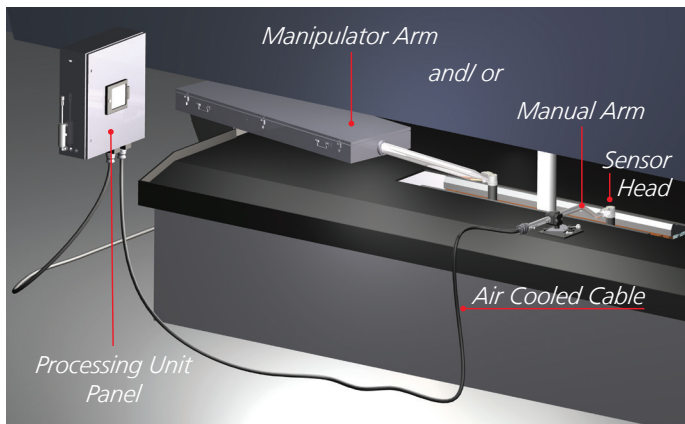
# Advanced eddy-current sensor for the best mould level control - Suspended type

The AVEMIS XLEV-S suspended eddy-current mould level sensor provides accurate measurement and short response time for improved automatic level control performances



## XLEV-S features

- Precise measurement of steel level in mould that is not influenced by casting powder
- No more health issue due to exposure to radioactive source
- Compatible with electromagnetic stirrers and brakes
- Fully digital signal processing with built-in Profibus DP - Ethernet/IP interface
- Dual-channel processing unit with possibility to combine different type of sensors
- Easy and fast calibration procedure
- Flexible location of processing unit panel with cable length up to 120 m without pre-amplifier and easy relocation of HMI



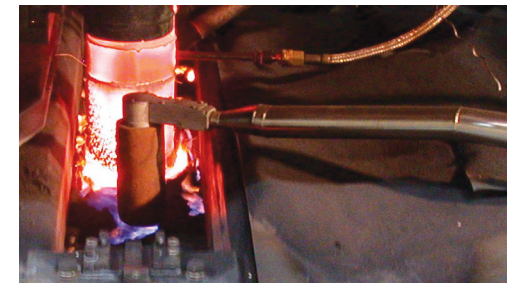
## AVEMIS XLEV-S Sensor Heads

	XSCH85-MTL	XSCH55-1	XSCH35-1	XSCH30-MTL	XSRH3672-1
Model					
Outside Diameter (*)	85 mm	55 mm	35 mm	30 mm	Rect. 36x72
Measuring range (Level Control)	0~200 mm	0~150 mm	0~100 mm	0~100 mm	0~150 mm
Extended range (AutoStart)	0~250 mm	0~200 mm	0~180 mm	0~180 mm	0~200 mm
Fiber protection OD/ID	N.A.	XFPS55-1 77/57 mm	XFPS35-1 50/38 mm	N.A.	N.A.
Typical applications	Slab thickness >200 mm	Slab thickness >150 mm	Bloom >200x200	Bloom >180x180	Thin slab > 90 mm

NOTE: \* Without optional fiber protection

## Optional fiber protection sleeve

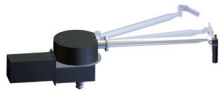
- Enhanced mechanical protection
- High thermal protection





#### XTRM Linear+ Rotation pneumatic manipulator

- Automatic positioning with up to 1150 mm linear stroke and 90° rotation
- Mounted on tundish car or on casting floor with pivoting support
- Slab casters with up to 3m between pivot and sensor head



#### X2RM Rotation pneumatic slewing manipulator

- Automatic positioning with 90° arm and 90° head combined motions
- Compact design with arm length up to 2000 mm
- Large bloom & slab casters



#### XS2A Semi Auto sensor Arm

- Automatic head retraction with manual positioning, 45° arm and 90° head combined motions
- Compact design with overflow protection
- Small bloom & Thin Slab casters

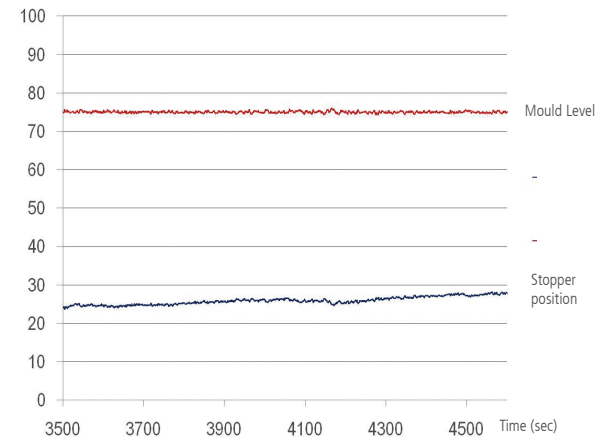


#### XSMA Manual Arm

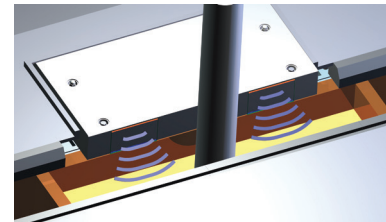
- Simple and repeatable positioning
- Quick fixing

### Mould Level Control with XLEV-S

- Precise mould level
- Enhanced steel quality
- Reliable performance



### XLEV-L Ledge Type Sensor



AVEMIS "Ledge Type" level sensor enables to stay in automatic mode during the tube change and can be combined with «Suspended type» sensors.



For more information on this product and on our complete package of solutions please contact our local service center:

*R&D - Engineering Center:*

**AVEMIS SAS**

2, Hôtel d'entreprises  
ZI Grange-Eglise  
69590 Saint Symphorien / Coise  
France  
Tel: +33 472 81 88 52  
Fax: +33 488 10 05 37  
contact@avemis.fr  
www.avemis.fr

**VESUVIUS USA CORP.**

P.O. Box 4014  
1404 Newton Drive  
Champaign, IL 61822  
USA  
Tel: +1 217 351 5000  
Fax: +1 217 351 5031

**VESUVIUS ADVANCED CERAMICS (CHINA) CO., LTD**

221 Xing Ming Street  
China-Singapore Suzhou Industrial Park  
Suzhou 215021, JiangSu Province  
P.R. of China  
Tel.: +86 512 6741 2088  
Fax: +86 512 6741 1700

**VESUVIUS REFRATARIOS, LTDA**

Av. Brazil 49.550  
Distrito Industrial de Palmares  
CEP '23065-480-Campo Grande  
Rio de Janeiro , Brazil  
Tel: +55 21 2414 0606  
Fax: +55 21 2414 0648

**VESUVIUS INDIA LTD**

P 104, Taratolla Road  
700088 Calcutta, India  
Tel: +91 33 240 10 234  
Fax: +91 33 240 11 235

**VESUVIUS GROUP, S.A.**

Rue de Douvrain, 17  
7011 Ghlin, Belgium  
Tel: +32 65 400 810  
Fax +32 65 311 474  
gh@vesuvius.com

VESUVIUS reserves the right to modify and/or improve the equipment as described and specified in this leaflet, at any time according to the state-of-art.

© copyright Vesuvius Group S.A. 2013-2015 all rights reserved. All product names in this brochure are trademarks or registered trademarks of Vesuvius plc group of companies.